

FILM THEATRE

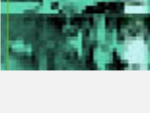
"ALL THE WORLD'S A STAGE", SHAKESPEARE WROTE. FOR HUNDREDS IF NOT THOUSANDS OF YEARS, THEATRE — ACTORS ON STAGE IN FRONT OF AN AUDIENCE — WAS THE HUMAN RACE'S MOST POWERFUL AND ENTERTAINING WAY OF LOOKING AT ITSELF. NO WONDER THAT WHEN FILM WAS INVENTED, FOR A WHILE THE NEW MEDIUM STOOD SOMEWHAT IN AWE OF ITS CLEVER OLDER COUSIN.

EARLY ON, FILM OFTEN DEPENDED ON THEATRE FOR CONTENT — WHETHER IT WAS VAUDEVILLE GAGS OR THE WORKS OF SHAKESPEARE. BUT IT WASN'T LONG BEFORE THINGS CHANGED...

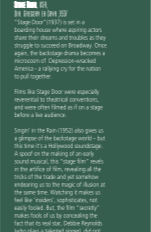
STAGE STRUCK

In the days of the silent movie, film suffered under one enormous disadvantage relative to theatre: its actors couldn't speak. In 1927, all that changed with the seminal first words of the first feature-length film, "The Jazz Singer": "You ain't heard nothing yet, folks!"

THE JAZZ SINGER (1927)
The first feature-length film with synchronized dialogue.



THE JAZZ SINGER (1927)
The first feature-length film with synchronized dialogue.



THE JAZZ SINGER (1927)
The first feature-length film with synchronized dialogue.



THE JAZZ SINGER (1927)
The first feature-length film with synchronized dialogue.

TRIM MARKS



LVL 2
458-468 WATTLE SREET
ULTIMO NSW 2007
AUSTRALIA
TEL: +61 2 9212 0099
FAX: +61 2 9282 9222

FILE	G_04A
ISSUE	B

PROJECT	PROJECT NO. 2517 INNOVATIVE GALLERY
STAGE	PRINTER'S PROOF
DATE	30 SEPTEMBER 2002
SCALE	1:10
DIMENS.	2740mm x 1740mm

IMAGES POSITIONALS	To be PLACED by production contractor
--------------------	---------------------------------------

THE JAZZ SINGER	200 X 160 / 150DPI
42ND STREET	250 X 310 / 150DPI
SINGING IN THE RAIN	1450 X 1750 / 100DPI

GENERAL NOTES
VERIFY ALL IMAGES AND THEIR NOTED COLOUR ON PROOF.
SPECIFIED DIMENSIONS ON PROOF NEED TO BE V-O-S. IF ON-SITE DIMENSION DIFFER THE ON-SITE DIMENSION SHALL PREVAIL & GRAPHIC AMENDED WITH DFA APPROVAL.
SEE GRAPHIC SPECIFICATION